



# SCHOOL OF FISH

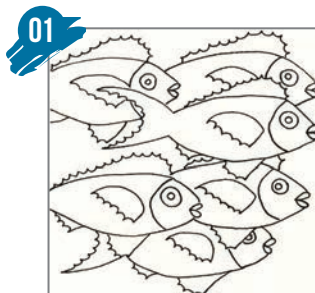
## watercolour project sheet

by Pauline Roods

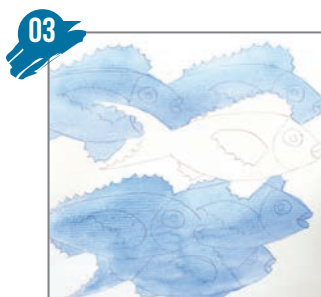
If you've had minimal experience with watercolours then this is the project for you. A simple fish design takes on a new dimension when repeated and grouped. We have provided a downloadable template of the design so all you need to do is trace it off and you can get started with your watercolours.

### YOU WILL NEED:

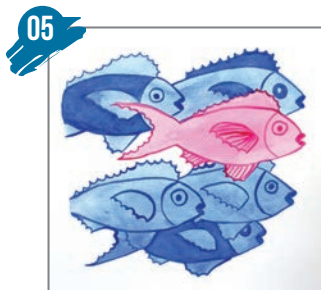
- Downloadable artwork template\*.
- 1 Sheet of watercolour paper (250gsm or more)
- 1 x container for clean water
- Watercolour paint palette (an ice cube tray is ideal)
- 1 x HB Pencil
- Tracing paper or kitchen baking paper
- Derivan watercolours in Magenta and Cobalt Blue Hue
- Round brushes in sizes No.1 and No.8. (Synthetic or real hair)



Using the template\* and HB pencil, trace the fish design onto the watercolour paper. Alternatively, you can also photocopy or scan/print the design if preferred. Place small amounts of the watercolour paint into separate compartments in the palette. Mix with water. The aim is to have one dark shade and one lighter shade of each colour.



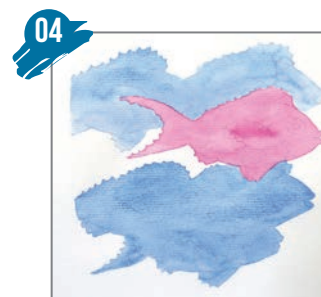
Repeat this process with the bottom three fish. Allow to dry.



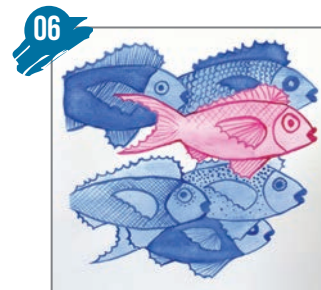
Using the No.1 brush, paint over the outlines of the fish design with the darker shade of the base colour. You can also fill in specific areas if desired.



The No. 8 brush is for painting larger parts of the fish and the No.1 brush for adding details. Using the No. 8 brush, wet the top two fish with clean water only. Dip the brush into the lighter Cobalt Blue Hue blend and apply to the whole fish.



Repeat the step 2 with Magenta watercolour for the centre fish.



When all fish are dry use the No.1 brush to paint on the details for each fish using the same darker version of the base colour. How you do this is up to you, but you may want to consider detailing different parts of each fish to add variety. Repeat this process for the Magenta fish. Allow to dry.

**DERIVAN**

Derivan Pty Ltd  
ABN 36 003 273 925  
Unit 4/23 Leeds St. Rhodes NSW 2138  
T: 02 9736 2022 F: 02 9736 3637  
derivan@derivan.com.au