

Extreme Blushing Rose

by Brenda Harkness



Materials:

Square Canvas Board of choice. (I used 40cm x 40cm but as long as you have the resources to enlarge, it can be any size.)

Matisse Gesso

Matisse Background Paint -Victoria Pink

Matisse Flow Formula Paints:

Shading colours:

- Perm Light Violet
- My Pink
- Magenta
- Deep Rose Madder
- Burgundy

Highlight Colours:

- Magenta Light
- Ash Pink

Brushes: - Personal choice of

- Flats
- Angle Shaders
- Dagger Stripers
- Smudge Tints
- Liners

Saral Transfer paper -Blue

Preparation:

1. Apply 2 coats of Gesso, sanding between coats and 2 coats of Victoria Pink also sanding between coats and after.
2. Transfer traced pattern using blue Saral transfer paper omitting dotted lines. These are shown a guide to colour placement.

STAGE 1: Defining

3. Using watery washes of Magenta Light and Permanent Lt Violet on the dagger striper or angle shader brushes and paying attention to the finished rose and the dotted lines on the tracing, shade these areas in relevant colour.

This is the basic "getting to know you stage". Once this is applied the rest will fall into place.

STAGE 2: Refining

4. Deepen shading with My Pink and Magenta brush blending, with touches of Deep Rose Madder in the darkest areas.
5. Smooth out the highlight areas Ash Pink and Magenta Light and touches of Perm Violet Light, again brush blending. The strongest highlights are straight Ash Pink.

STAGE 3: Detailing

6. This stage we use much smaller applications of paint in the corner areas to give it some depth.
7. Using burgundy shade the smallest corner areas and crevices at the darkest points on the finished rose. Less is best with this stage.
8. Finally, apply a light wash of Magenta to the centre area and add some dewdrops wherever you wish.

DEWDROPS:

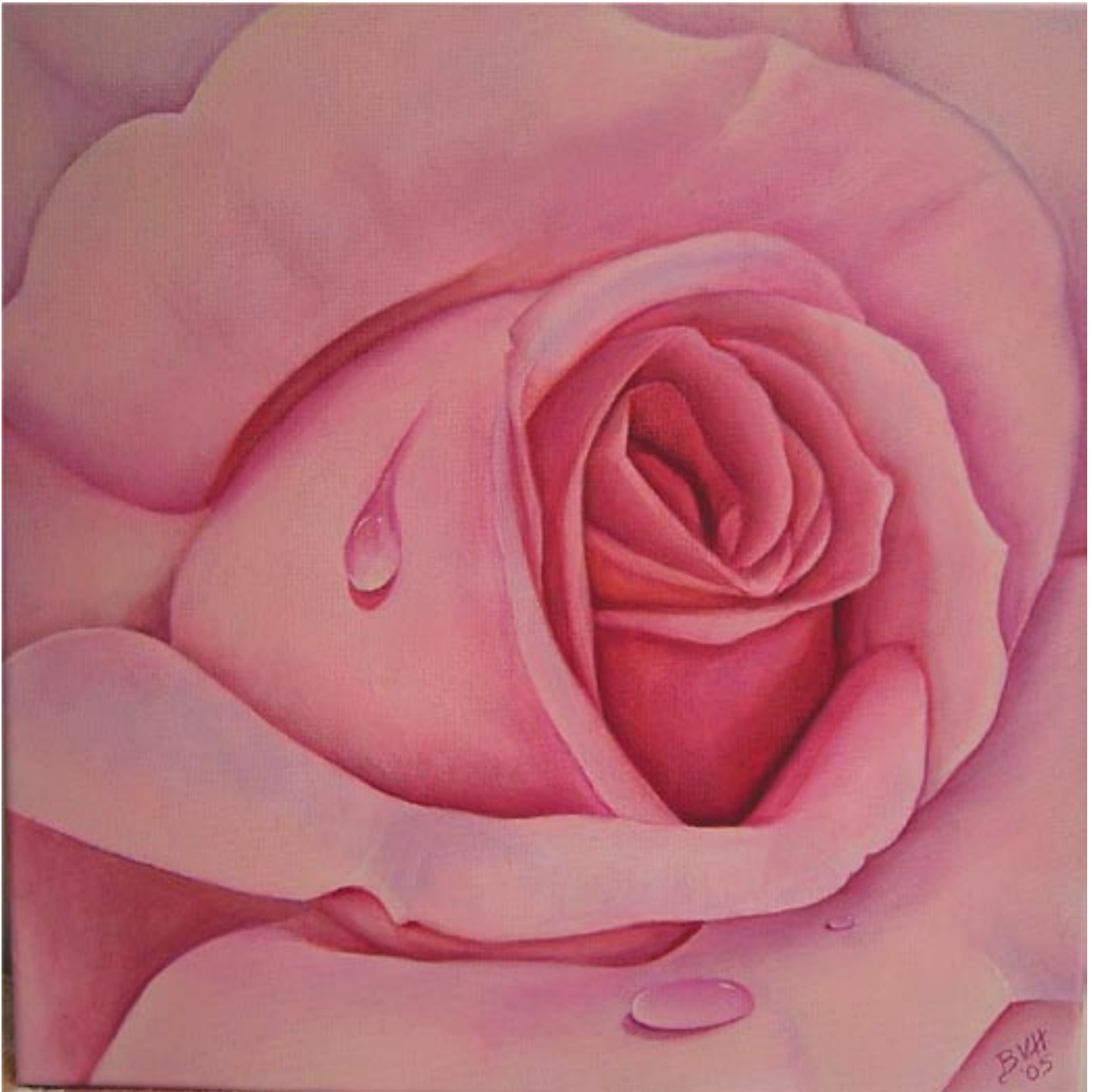
9. Shade these with Magenta and touches of Burgundy. Highlights are Ash Pink/Magenta Light washes and liner strokes of straight Ash Pink for the final highlight.

By brush blending I mean blending the colours together with the brush in whatever fashion suits you. They don't call me the brush basher for nothing. Sometimes I will really scrub that paint in to get the effect I am after. It may mean throwing the brush away after but it is worth it.

*Original Design by Brenda Harkness © copyright 2004
For Personal Use Only*

Extreme Blushing Rose

by Brenda Harkness



MAKERS OF THE FINEST QUALITY ARTIST MATERIALS

Extreme Blushing Rose

by Brenda Harkness



© Brenda Harkness 2004